

Sherpak SMART BARS

Dear Sherpak Smart Bars™ Customer:

Thank you for purchasing the Sherpak Smart Bars™. We are confident that with the proper care and consideration, you will be very satisfied with the Smart Bars™ performance.

Please follow these helpful instructions:

ASSEMBLY

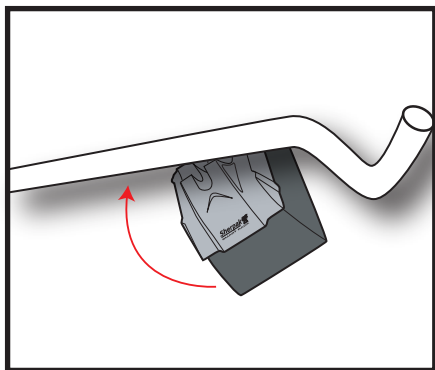
Before loading, make sure the roof of your vehicle has been washed thoroughly to prevent dirt from scratching the surface of your roof underneath the foam feet. Please fully assemble the rack before putting it on the roof of your vehicle.

RACK

Simply snap the feet onto the Smart Bars.

FEET

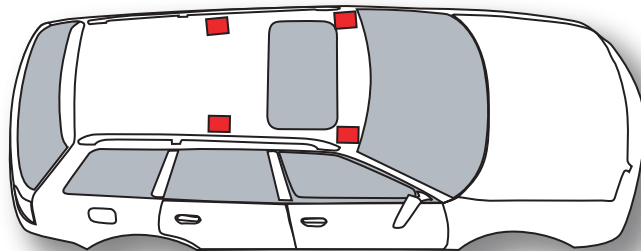
Position the feet under the bar near the first bend. The plastic cap is made from a soft material that will allow you to push it onto the bar. Start by pushing it on at an angle. Once you have the foot started it should snap on the rest of the way.



POSITIONING

Position the Smart Rack™ on the roof between your vehicle's rack bars with the foam feet positioned at the widest point on the rack. Hint: The closer you get to the edge of your roof line the better. The roofs strongest points lie at the edges. Do not position the Smart Rack™ on top of sun/moon roofs. The Smart Rack™ must be positioned on the roof. Move any existing rack bars so that the foam feet are securely positioned on the rooftop and in between any and all rack bars.

Assembly and Mounting Instruction

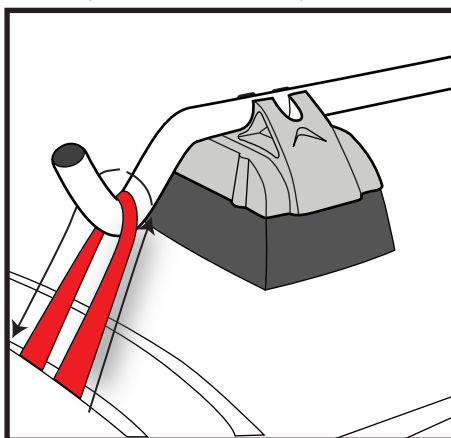


STRAPPING

When strapping the Smart Bars™ to the roof of your car, it is important to secure it so it doesn't move.

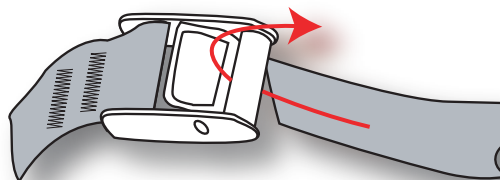
Attaching to a vehicle with no rack.

Take the cam buckle end of the strap in hand and loop it through the elbow in the outer frame assembly. Dangle enough strap with the cam buckle so it will hang approximately in the center of your car cabin. Next, take the other



end of the strap and run it through the car, making sure the strap is not twisted, run it up and around the adjacent elbow on the rack, and back down into the car to meet the metal cam buckle. Now, join the cam buckle and the strap end and tighten.

When you tighten the strap, be sure not to over tighten. (This may lead to depressions in your roof.) You want the rack to be tight and not move. Test by grabbing the rack and giving it a good shove back and forth.



Thank you for purchasing our high-quality Sherpak Smart Bars™. Happy trails!

Seattle Sports Company
6200 Seaview Avenue NW Seattle, WA 98107
PHONE: 206-782-0773 * FAX: 206-782-0651
www.seattlesportsco.com



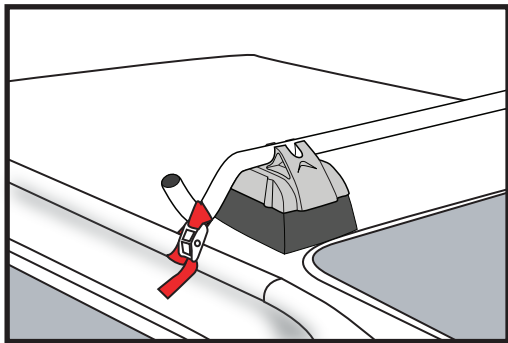
STRAPPING (cont.)

Attaching to a vehicle with an existing roof rack.

If your car already has a rack system in place, you can still use the Smart Bars™. It is important to make room for the Smart Bar™ feet to sit on the roof of your car, between the bars of your existing rack.

Once you have your rack positioned, you run the straps through the elbows on the bar and through the car cabin.

If you purchase our Rack Lashers, you can secure the rack directly to your existing rack system, by running the straps around the outer frame elbow and around your rack bars. Apply equal pressure to all the straps and tighten. Be sure to secure the straps in a way they will not allow any side to side, or front to back movement.



WARNING

- Check the load limit for your vehicle before loading. Failure to do this can result in damage to your vehicle.
- Always secure the Sherpak Smart Bars™ before driving.
- If you hear excessive flapping, or any thumping noise, immediately pull over and check to make sure the Smart Bars™ is firmly secured.
- Contents may shift during travel.

ACCESSORIES FOR YOUR SMART BARS

We also offer several accessories for your Smart Bars system.

Rack Lashers

If you are mounting your rack on vehicle with an existing roof rack, this set of four 18" straps is perfect for this. It secures the bars to your factory or existing roof rack and eliminates any excess webbing.

Locking Cable

This is a plastic coated cable and locking device, designed to secure the contents to the car simply and securely.

Rain Sleeves

If you mount your rack to your car through the car doors, you might want to consider our rain sleeves. They completely cover the exposed strapping and help to reduce the moisture that can travel along the straps.

GUARANTEE

This product is guaranteed for material and workmanship for one year. This warranty is applicable only if all of the above instructions are followed and the product is used as recommended.

Normal wear and tear or damage resulting from misuse, accidents or alterations are not covered by this limited warranty.

The purchaser and/or user of this Smart Bars™ acknowledges that Seattle Sports has no control over the attachment of its products to vehicles, nor does Seattle Sports have control over items which are loaded into the Smart Bars™. Seattle Sports thus assumes no responsibility for any damage to any property or persons arising out of the improper attachment, use or loading of this Smart Bars™.

This limited warranty is in lieu of all other warranties expressed or implied, and does not cover consequential damages of any kind that may arise from use or misuse of any Seattle Sports product.

Thank you for purchasing our high-quality Sherpak Smart Bars™.
Happy trails!

Seattle Sports Company
6200 Seaview Avenue NW Seattle, WA 98107
PHONE: 206-782-0773 * FAX: 206-782-0651
www.seattlesportscos.com

